



lighting and architecture 2004

Lighting design: 2004

– OUTDOORLIGHTING JORDBRO/SE
3.10.2004-13.10.2004

SPOKEN WORD SEATED

The enlighten object – an icon creating corporate identity, is referring to the cities tradition of spoken word.

As an urban element emphasizing communication, it is located on the site of the football field – an area connecting people and enabling privacy in public space.

The SPOKEN WORD SEATED BENCH is an element for identification, interpretation and orientation. It is an installation for Jordbro people.

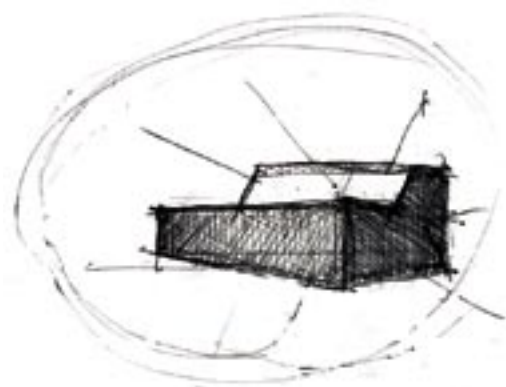
applied fittings:

- 2x 400W Halogen floodlight
- 2x 150W Halogen floodlight

Project team: Claudia Kappl, Alexandra Schremer

Project partners: Municipality of Jordbro, KTH-Syd Ljuslaboratoriet, ELDA, Fredrika Bremergymnasiet

thanks to: Rune Lindroth, Teemu Nerama BP 3A, Håkan Vinstedt, Charlie Tancharoen and Philipp Stegmüller



Lighting processing: 2004

– LIGHTS IN ALINGSÅS – ELDA WORKSHOP
27.09.2004-2.10.2004

LETICIA'S WORLD

Leticia's curiosity, reflection and interaction feeds the spectators curiosity from viewing the space through a child's perception.

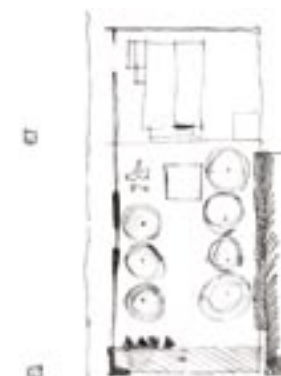
Does the garden reveal the past, childhood, or echoes of the summer, or is it rather a surreal dreamlike image? The layers and textures of foliage, brick, warm light and cold light reveal an oasis evoking feelings of safety and home. The new layer- light- is enabling Alingsås to take a glimpse into LETICIA'S WORLD.

applied fittings:

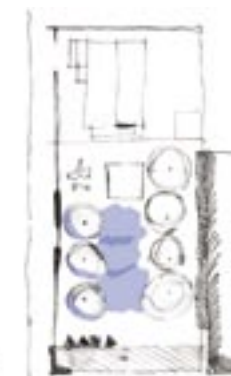
- Blue trees: Martin prof. exterior 200. Metal Halid [dimmed to 18%]
- Path of light: Iguzzini Yota. 70W. Ceramic Metal Halide [CDMT/830]
- Moonlights: We-ef FLC 131. 35W CDMT/830, blue filter. adjustable spot
- Backlight: We-ef. 3x FLC 131
- Tree middle: 2x Iguzzini Mini-Woody. 12V, 50W. Tungsten Halogen
- Tree front: 1x Iguzzini Mini-Woody
- Backdrop: Philips Ledline [1200mm], cool white, narrow g optic

Project group: Martin Lupton. BDP London/UK

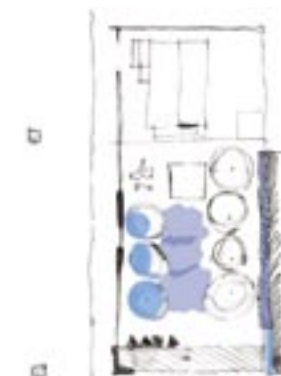
Project team: Ulrika Carlberg, Amy Louise Dean, Claudia Kappl, Ann-Sofi Krook, Nicolaj Rybka, Alexandra Schremer, Hillevi Skoog, Silke Wagner



site plan



cold-/moonlight



cold-/moonlight,
canope – tree-/uplight
warehouse – backlight



cold-/moonlight,
canope – tree-/uplight
warehouse – backlight
warm-/tree downlight

Daylighting+architecture: 2004

– PROPOSAL FOR THE DAYLIGHT DISTRIBUTION SYSTEM FOR A FLOATING VILLA AT THE RIVERSIDE RESIDENTIAL AREA OF MARINSTADEN, NAKA/SE
26.04.2004-18.05.2004

To optimize the daylight qualities in the object we were aiming on an adequate internal organization in combination with the focus on increasing and using reflections.

Project team: Hans Arvidsson, Ulrika Bergström, Kyung Hye Lee, Claudia Kappl, Paulina Villalobos

