

LJUSARKITEKTUR P&Ö AB. 01.2005–03.2007:

WORKING AS JUNIOR LIGHTING DESIGNER, PROJECT MANAGER AT LJUSARKITEKTUR P&Ö AB PRINCIPALS KAI PIIPPO AND NIKLAS ÖDMANN

PROJECTS WORKED ON WITH KAI PIIPPO

DUBAI – VILLA OF NINE COURTS	2005.01-2006.01
SOLNA BUSINESSPARK – FAÇADE LIGHTING	2005.02-2005.10
SICKLA GALLERIA	2005.12
COMPETITION ENTRY – LYON EUREXPO	2006.04
STURE GALLERIAN	2005.11
LECTURE/SEMINARY AT FOLKSUNIVERSITÄTET	2006.09
UTAH – AMANGIRI	2005.03-2007.03
ELLIOTT – PRIVATE RESIDENCE	2005.06-2007.03
ST.EDWARDS CHAPEL – HOLY CROSS INSTITUTE	2006.01-2007.03
Q-MED	2006.02
HACIENDA DE TAOS	2006.09-2007.02
NORDIC LIGHT HOTEL	2005.12-2006.03; 2006.12-2007.02
GRUNDWALSKY POINT	2006.10-2006.12
WOODSTOCK FARMHOUSE	2007.02-2007.03

PROJECTS WORKED ON WITH NIKLAS ÖDMANN

BORÅS	2005.04
FILIPPA K	2006.01-2006.02
MEGA IKEA	2005.04-2005.05
STRANDVÄGEN	2006.10-2007.03
SJÖSTADSPORTEN	2006.12-2007.03
SICKLA EXTERIOR	2007.02-2007.03

working experience 1998/2007

JUNE 2004

WORKING AND EXPERIMENTING WITH THE MATERIALS: DIABAS AND WOOL:

STONE. SÖLVESBORG. SOUTH OF SWEDEN:

Diabas, black Granit, found in the Blekinge region in the South of Sweden is especially tricky in preparation. The lifelong experienced stonesculptor Mats Nilsson guided the first steps in working with diamant tools, that are needed to trim this kind of stone.

WOOL. FOLDVIK, STAVERN. SOUTH OF NORWAY:

Experiencing the process of the making of a piece of wool-cloth, the stages from brushing the raw sheepfear to the smooth cosy piece of fabric was elaborated with the artist and femi-designer Maria Manuela Rodrigues in the femi atelier in Foldvik, Stavern.



KUNSTHAUS GRAZ AG. 10.2002–11.2003

WORKING FREELANCE FOR THE CLIENT – THE KUNSTHAUS GRAZ AG, PROJECTMANAGEMENT. MOSTLY IN THE FIELD OF PR AND COMMUNICATION, CONSTRUCTION-SITE GUIDE-TOURS AND ORGANISATION.

The Kunsthau Graz is an exhibition hall designed for international exhibitions of multidisciplinary modern and contemporary art. As a place for multidisciplinary exhibitions, actions and exchange, the Kunsthau Graz offers a highly differentiated programme of spaces and functions:

- Ground floor
- KH: Media lounge, Bar, multi-purpose event space: 175m2
- Eisernes Haus: Platform for New Media, Museum shop, foyer: 150m2
- 1st floor
- KH: Project for youth and schools – multipurpose event space: 100m2
- Eisernes Haus: Camera Austria – center for photography: 150m2
- 2nd floor
- KH: Exhibition space and entrance zone: 800m2
- Eisernes Haus: Camera Austria exhibition, information, library: 165m2
- 3rd floor
- KH: Exhibition space: 1000m2
- Eisernes Haus: Conference terrace, information, library: 165m2
- On two levels, 1800 square meters of flexible exhibition space can be partitioned as needed, providing optimal conditions for international exhibitions. Large projects, multimedia installations and performances, among many other activities, can be realized in the multi-purpose event space on the ground floor.
- 4th floor
- Needle: Public readings, relaxation, public and private events: 150m2



CON: AND MVD.ORG. 06–08.12.2002.01.2003

DATA PROCESSING AND EDITION FOR THE PUBLICATION OF THE DOCUMENTATION BOOK ABOUT THE PANEUROPEAN ARCHITECTURAL HOUSING COMPETITION EUROPAN6

Collaboration with CON: – DI Heidi Pretterhofer, DI Dieter Spath, DI Bernd Knaller-Vlay. Elaborating the content for the europan6 publication in collaboration with the Vienna based architectural and grafics office MVD, therewith especially with DI Michael Rieper and DI Christine Schmauszer. The work was including preparation and data transfer and transformation of the award winning teams from the europan6 architectural competition.



CLAUDIO SILVESTRIN ARCHITECTS. 07–10.2001

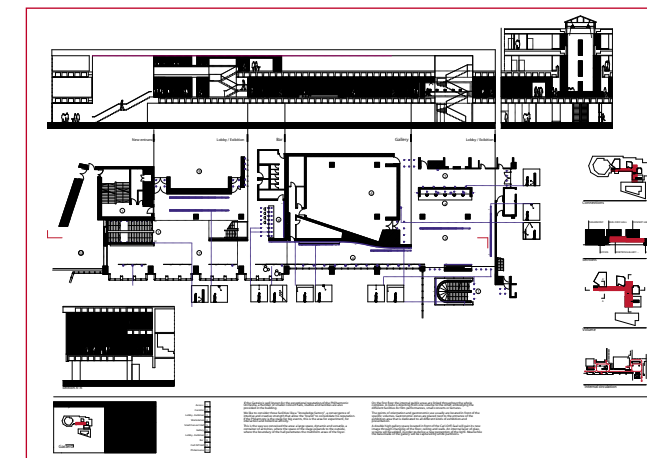
INVITED COMPETITION IN MUNICH/GASTEIG/DE. REDEVELOPMENT OF THE PUBLIC AREAS AT MUNICH GASTEIG

During the working experience at claudio silvestrin architects I had been involved in several smaller projects and stage developments. The major project yet has been the invited competition project for the redevelopment and new corporate design for the cultural centre of Munich Gasteig.

This Cultural Centre with 80.000 sqm and incorporating 7 different institutions, as well as diverse facilities should be given a new image. The course of restrictions and the programm had to be taken in consideration. We were asked to redevelop the building complex without touching or changing the building structure, consisting out of dominant red brick walls. Through a new lighting concept especially in the public transit zones an overall new and trendy appearance should be generated, attracting young people and targeting on a wider audience.

Project team: Lorenzo Barilli, Fabrizio Cellini, Claudia Kappl

Invited Competition: Röhm Private House and Galerie in Zürich/CH a bath design for Dormbracht/DE design of a Mocca machine/I Desmo catalogue/I Modelmaking for presentations on the Armanistore, Hongkong.



AA – ASSOZIATED ARCHITECTS. 06–09.2000

INVITED COMPETITION IN GLOSCAT/CHELTHENHAM/UK. 6TH FORM COLLEGE OF TECHNOLOGY AND DESIGN

The task of the competition project for the 6th Form College of Technology and Design, sited in Cheltenham – West Sussex, was to arrange the college facilities in addition to the mixed use facilities on the overall floorarea of 12.000 sqm.

Associated Architects were invited and short listed after the first round, but finally didn't get permission for building the design. The major focus was lying on the flexibility and probable future extensions of the building complex.

Private house extension, Swimmingpool. Competition: extension and redevelopment of Manchester University.

